

Today's webinar:

# The New ANSI A92 Standard for Aerial Lifts (MEWPs)

January 30

Presented by: Jeff Stachowiak, Sunbelt Rentals





If you are unable to hear the  
audio via your computer,  
please connect via your telephone  
using the following information:

**Dial: 866-552-9886**

If you require technical support,  
please call Blue Sky Customer Service  
at **888-364-8804**.



# Jeff Stachowiak

Safety Training Director, Sunbelt Rentals



- National Safety Training Director Sunbelt Rentals since 2000
- Equipment rentals since 1986
- Safety and Risk Manager since 1992 for BET Plant Services BPS Equipment Rentals and Sales
- Member of ANSI/SAIA A92 AWP's - MEWPs, ANSI/ITSDF B56.6 Rough Terrain Fork Trucks
- ISO TC214 MEWP Controls, ISO TC110 Rough Terrain Fork Trucks Training
- Past Vice President Scaffold Access & Industry Association, [www.SAIAonline.org](http://www.SAIAonline.org)

# What we will cover

---

- Design changes
  - New categories, Type and Group
  - Load sensing
  - Out of level cutout
  - Wind loading
  - Guardrails and Gates
  - Tires
- Shall offer training and familiarization
- Shall indicate annual inspection dates on the MEWP
- Risk Assessment
- Continue to train your own employees, operators and technicians
- Record keeping of training, familiarization and service of the MEWP

# Who

---

- American National Standards Institute ANSI/SAIA A92
- [www.saiaonline.org/a92](http://www.saiaonline.org/a92) for updates and new Manuals of Responsibilities AND to join
- ANSI A92 has worked the last 6 years to align with International Standards ISO, Canadian Standards CSA and others
- **Three standards are being replaced**
  - A92.3 Manually Propelled Elevating Aerial Platforms
  - A92.5 Boom-Supported Elevating Work Platforms
  - A92.6 Self-Propelled Elevating Work Platforms



# What

---

**The new standard released December 10, 2018 is**

- **MEWPs - Mobile Elevating Work Platforms**
  - A92.20 Design
    - Not retro active, OEMs have 12 months to comply after release date, December 2019 deadline
  - A92.22 Safe Use
    - Applies to all that utilize MEWPs Mobile Elevating Work Platforms
  - A92.24 Training
    - Applies to all that utilize MEWPs

# The Manual of Responsibilities

A new MoR will replace the three used currently

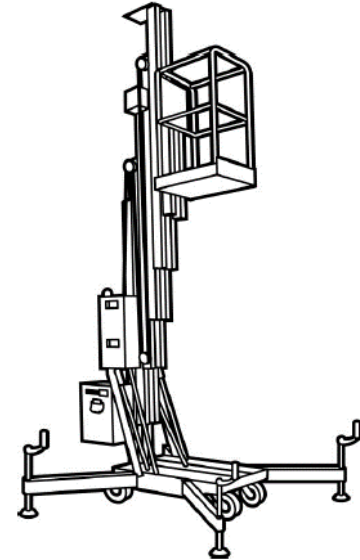
- A92.3, A92.5, and A92.6 will go away
- The new Manual of Responsibilities will cover
  - A92.22 Safe Use
  - A92.24 Training
- **IMPORTANT - This means you have the next 11 months to buy and replace these manuals (MoR) in all the lifts that you own**
- Available from you OEM or [saionline.org](http://saionline.org)



# What

---

- **MEWPs – NEW Categories**
  - **Type 1 MEWP:** MEWP for which travelling is allowed only when in the stowed position.
  - **Group A:** MEWPs on which the vertical projection of the center of the platform area, in all platform configurations at the maximum chassis inclination specified by the manufacturer, is always inside the tipping lines.
  - **Static Vertical Type (1A)**



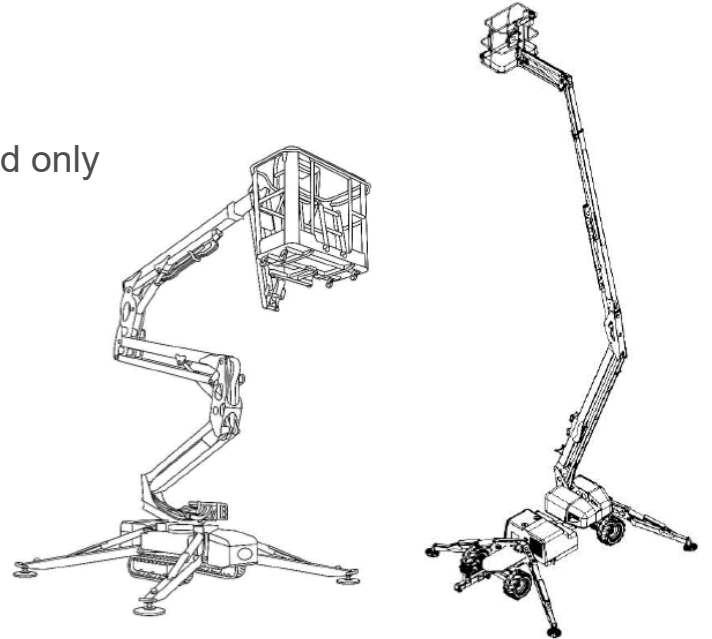


# What

---

- **MEWPs – NEW Categories**

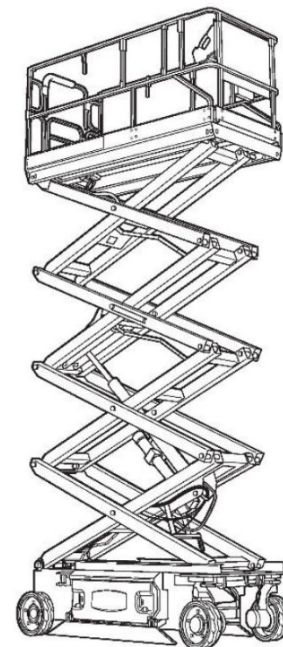
- **Type 1 MEWP:** MEWP for which travelling is allowed only when in the stowed position.
- **Group B:** MEWPs not in Group A
- **Static Boom Type (1B)**



# What

---

- **MEWPs – NEW Categories**
  - **Type 3 MEWP:** MEWP for which travelling with the work platform in the elevated travel position is controlled from a point on the work platform.
  - **Group A:** MEWPs on which the vertical projection of the center of the platform area, in all platform configurations at the maximum chassis inclination specified by the manufacturer, is always inside the tipping lines. *(Note: includes roll out decks)*
  - **Drivable from platform Vertical Type (3A)**

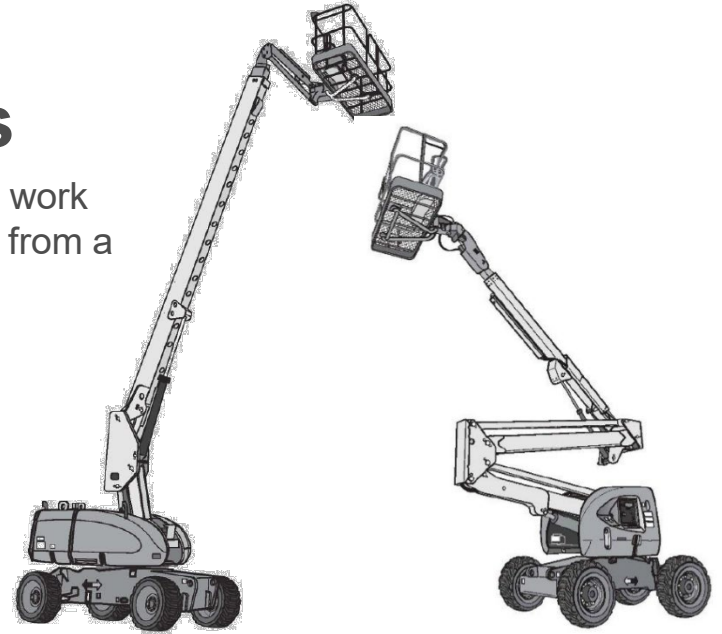


# What

---

- **MEWPs – NEW Categories**

- **Type 3 MEWP:** MEWP for which travelling with the work platform in the elevated travel position is controlled from a point on the work platform.
- **Group B:** MEWPs not in Group A
- **Drivable from platform Boom Type (3B)**

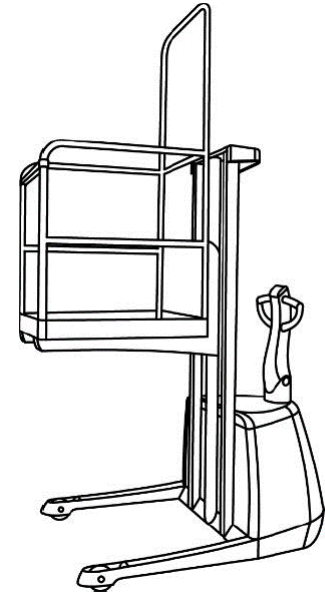


# What

---

- **MEWPs – NEW Categories**

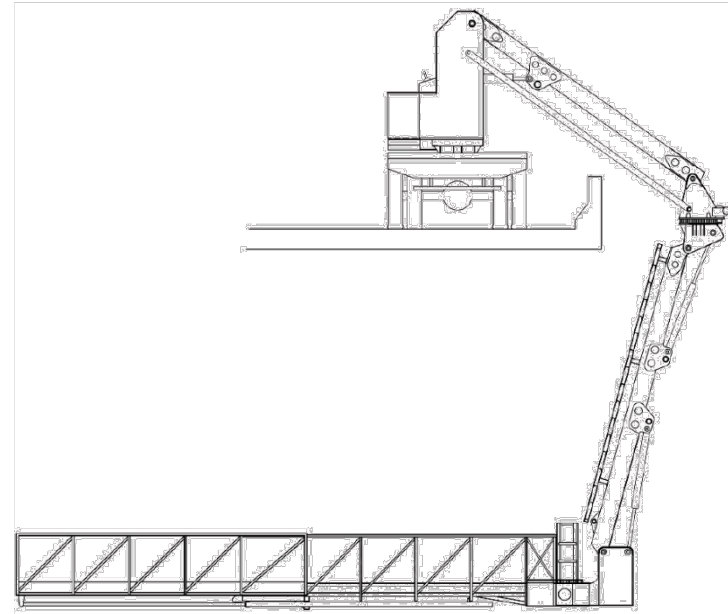
- **Type 2 MEWP:** MEWP for which travelling with the work platform in the elevated travel position is controlled from a point on the chassis.
- **Group A:** MEWPs on which the vertical projection of the center of the platform area, in all platform configurations at the maximum chassis inclination specified by the manufacturer, is always inside the tipping lines.
- **Drivable from ground Vertical Type (2A)**



# What

---

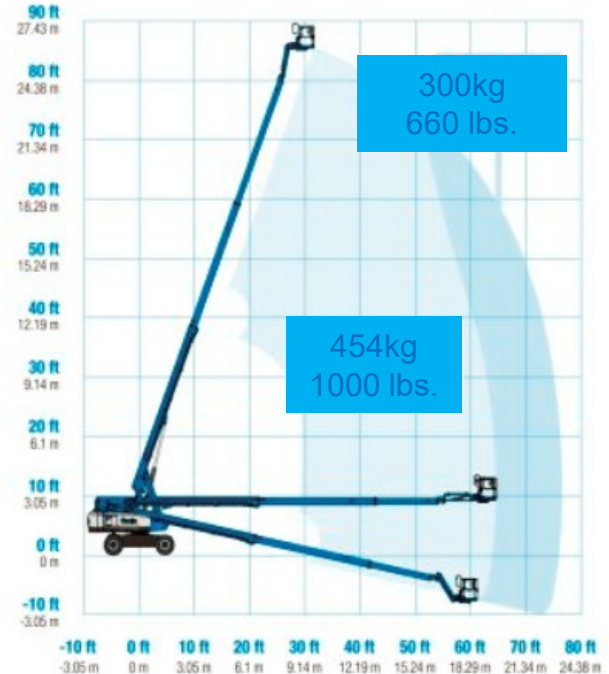
- **MEWPs – NEW Categories**
  - **Type 2 MEWP:** MEWP for which travelling with the work platform in the elevated travel position is controlled from a point on the chassis.
  - **Group B:** MEWPs not in Group A
  - **Drivable from chassis Boom Type (2B)**



# What - Design Changes

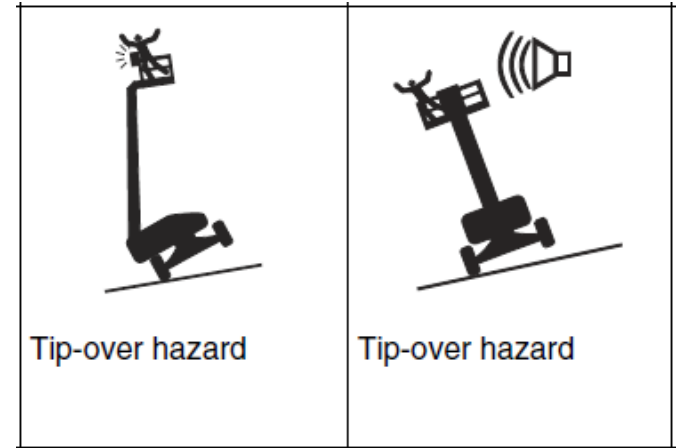
- Load Sensing
  - MEWPs will measure the weight in the platform
  - Many booms will have dual capacities
    - Will stay inside the appropriate load envelope
    - Based on weight in the platform
  - Will stop elevating if overloaded
  - **WARNING** - Be aware transport and tie down requirements will change related to the platform tie downs.

Range Of Motion S-85 XC



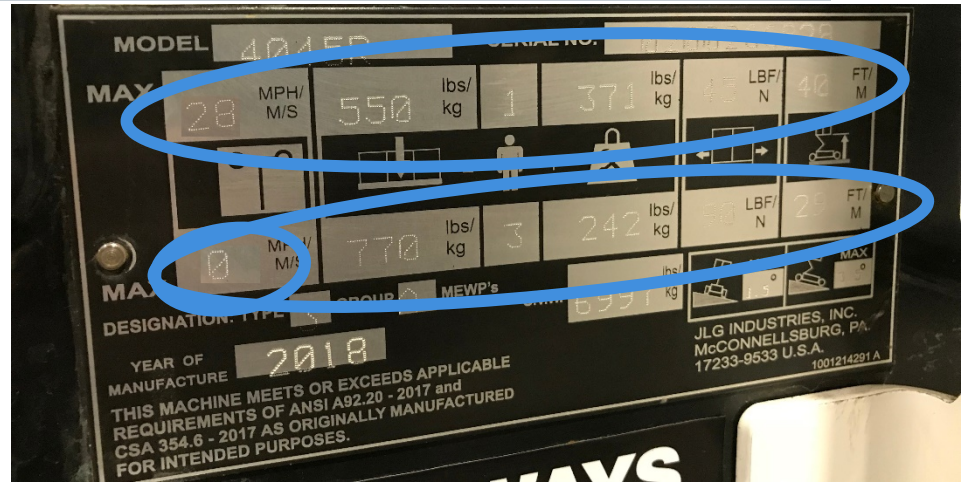
# What – Design Changes

- Tilt Sensing, Out of Level
  - MEWPs will measure how level the lift is
  - MEWPs will shut down lift and telescope as well as drive if out of level (when elevated)
  - Alarm and Warning light will sound
  - Out of level will vary depending on make, model
  - Example: some scissor lifts may measure 5 degrees front to back and only 2 degrees side to side
  - Example: Some booms may measure 5 degrees up to a certain height and then 2 degrees over that certain height



# What – Design Changes

- Wind Exposure
  - New wind stability testing and ID
  - If outdoor or exposed to wind must sustain 28 mph or 12.5m per second
  - Exposed to wind, may limit occupants and height (outdoor)
  - Not exposed to wind (Indoor)
  - Some lifts may work in both environments depending on how many workers are on the lift
  - See the ID plate for the rating



**This JLG 4045R 2018 ANSI compliant scissor lift is rated for outdoor use max wind 28 MPH with one person and maximum height of 40'.  
0 MPH wind speed exposure allows 3 persons, max height of 29'**



# What – Design Changes

---

- Guardrail Heights
  - Currently 39.5 inches (1 meter)
  - New standard will require 43.5 inch height (1.1 meter)
  - Most 19' scissors will have fold down rails now
- Gates with Toeboard
  - No chains or flexible gates allowed
- Stability Testing
  - Foam or Solid Tires required
  - If air filled tires, lift will have to remain stable if tire goes flat
    - Or have air monitoring system
    - May NOT be feasible



# What – Design Changes - Review

---

- Not retro active
- Designs must change within 12 months of Dec 2018 release
- Does not apply to remanufactured MEWPs manufactured prior to activation date
- Design changes -
  - Load sensing
  - Out of level drive cut out when elevated
  - Wind load ratings changes
  - Guardrail height changes
  - No flexible guardrail gates
  - Solid or foam filled tires



# What – Responsibilities

## What is required in the new A92.22 Safe Use Standard

---

- Qualified Operators
  - Trained
  - Authorized
  - Familiarized
- MEWP proper selection requirement
- Supervisor training
- Occupant training
- Technicians trained
- Annual Inspections – identified on the MEWP
- Risk Assessment defined

Photo  
Optional

Trainer  
Logo  
Optional

Operator's Name:

Type and Group MEWP

Trained on:

Trainer's name:

Date:

Expire date (optional):

# What – Responsibilities

## Training - What is required in the new A92.22 Safe Use Standard

- Qualified Operators
  - Trained
  - Authorized
  - Familiarized

### Trained – per ANSI A92.24

- Classroom
- Hands-on evaluation/practical
- Rental Company shall offer training
- Records, name, MEWP category, trainer's name, date, expire date

### Familiarized

- Offered by Rental Company
- Responsibility of User

### Authorized

- By the User, supervisor
- User is responsible for training and familiarization

# What – Responsibilities

## Familiarization - What is required in the new A92.22 Safe Use Standard

---

**Familiarization:** Providing the necessary information regarding the features, functions, devices, limitations and operating characteristics as defined by the manufacturer in the operator's manual, in order to properly utilize a specific model MEWP, to include the manufacturer's operator's manual and current ANSI A92 Manual of Responsibilities

### 6.2.4 Familiarization

- **6.2.4.1** Prior to users authorization of an operator to use a specific model of MEWP, the user shall ensure the operator is familiarized on the following, and as specified by the manufacturer:
  - a) identification of the location for the manual(s) storage;
  - b) requirement for confirmation that the required manual(s) specified by the manufacturer are with the MEWP;
  - c) purpose and function of the controls specific to the model of MEWP to be used;
  - d) features, limitations and devices; and
  - e) operating characteristics specific to the model of the MEWP.

# What – Responsibilities

## Annual Inspections - What is required in the new A92.22 Safe Use Standard

- Annual Inspections – identified on the MEWP

**Note: First Delivery 5-8-13,  
Annual due 6-8-14, within 13  
months.**



# What – Responsibilities

## Risk Assessment - What is required in the new A92.22 Safe Use Standard

**Risk Assessment:** The process to identify potential hazards associated with a task and work environment where the task is to be performed and the development of methods to remove or control the risk to workers from identified hazards.

Users responsibilities includes you the rental company, risks like

- Loading and Unloading
- Transport
- Yard
- Overhead hazards
- Ground support
- Contact your OEM rep or their safety department for help
- [www.saiaonline.org/oshaallianceresourcestools](http://www.saiaonline.org/oshaallianceresourcestools)



Through the OSHA and Scaffold & Access Industry Association (SAIA) Alliance, SAIA developed this Tip Sheet for informational purposes only. It does not necessarily reflect the official views of OSHA or the U.S. Department of Labor. September 2013



### AWP Jobsite Checklist

Company Name: \_\_\_\_\_ Date: \_\_\_\_\_

Type: \_\_\_\_\_ Model No: \_\_\_\_\_ Project No: \_\_\_\_\_

Equipment/ID No: \_\_\_\_\_ Hr. Meter Reading: \_\_\_\_\_ Project Name: \_\_\_\_\_

Inspector's Name: \_\_\_\_\_

The following items must be checked as applicable. If not applicable, check N/A. Please see back for descriptions.

Check & Notes		Describe hazard & correction
Operator and occupants trained	<input type="checkbox"/> Yes <input type="checkbox"/> N/A	
Will the lift platform reach the work area? Lift platform to work area from lower controls to ensure the platform reaches work area.	<input type="checkbox"/> Yes <input type="checkbox"/> N/A	
Surface and soil conditions where the lift will be operated; including sufficient strength to withstand all floor/ground load forces imposed by the aerial platform in all operating configurations. See operator's manual.	<input type="checkbox"/> Yes <input type="checkbox"/> N/A	
Pedestrian traffic where the lift will be operated - barricades, traffic control	<input type="checkbox"/> Yes <input type="checkbox"/> N/A	
Public roadways, spotter, signal person	<input type="checkbox"/> Yes <input type="checkbox"/> N/A	
Precautions for other moving equipment - barricades, traffic control	<input type="checkbox"/> Yes <input type="checkbox"/> N/A	
Narrow aisles and other restricted places where the lift will be operated	<input type="checkbox"/> Yes <input type="checkbox"/> N/A	
Ramps and other sloped surfaces that could affect the vehicle's stability	<input type="checkbox"/> Yes <input type="checkbox"/> N/A	
Drop-offs or holes, including those concealed by water, ice, mud, etc.	<input type="checkbox"/> Yes <input type="checkbox"/> N/A	
Debris, housekeeping, pick up debris	<input type="checkbox"/> Yes <input type="checkbox"/> N/A	
Bumps or floor obstructions	<input type="checkbox"/> Yes <input type="checkbox"/> N/A	
Overhead obstructions and crushing hazards	<input type="checkbox"/> Yes <input type="checkbox"/> N/A	
Electrocution hazards, stay 20 feet away or notify power company to Lock Out power. Observe minimum approach distance. Refer to Operators Manual.	<input type="checkbox"/> Yes <input type="checkbox"/> N/A	
Hazardous environmental locations where the vehicle will be operated	<input type="checkbox"/> Yes <input type="checkbox"/> N/A	
Wind and weather conditions - lightning, wind limited to manufacturers' requirements	<input type="checkbox"/> Yes <input type="checkbox"/> N/A	
Closed environments and other areas where insufficient ventilation or poor vehicle maintenance could cause a buildup of carbon monoxide or diesel exhaust	<input type="checkbox"/> Yes <input type="checkbox"/> N/A	
Other possible unsafe conditions	<input type="checkbox"/> Yes <input type="checkbox"/> N/A	
<b>If any of the above conditions change, STOP, and address on the back of this form.</b>		

# How – you can get involved?

[www.saiaonline.org/a92](http://www.saiaonline.org/a92)

---

- ANSI A92 Membership
  - [www.saiaonline.org/a92](http://www.saiaonline.org/a92) application at bottom of the page
  - \$250 per year
  - We will help you complete the application and mentor you thru the processes
  - Meetings once per year with regular conference calls
  - You and we, the rental industry, can make a difference
  - Talk to the manufacturers about these changes
  - Ask for changes to design and other aspects



# What – Responsibilities

## What the Rental Company needs to know

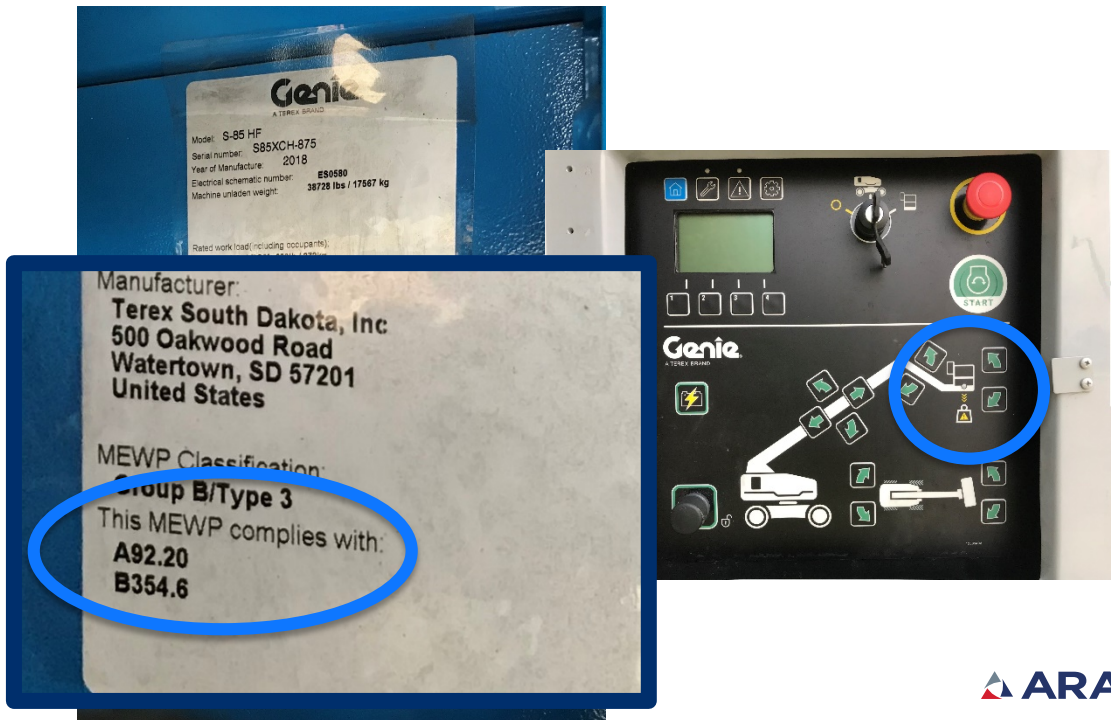
---

- Design changes
  - New categories, Type and Group
  - Load sensing
  - Out of level cutout
  - Wind loading
  - Guardrails and Gates
  - Tires
- Shall offer training and familiarization
- Shall indicate annual inspection dates on the MEWP
- Continue to train your own employees, operators and technicians
- Risk Assessment
- Record keeping of training, familiarization and service of the MEWP

# Questions

- How will I be able to tell a new A92.20 MEWP from a A92.5 or A92.6 MEWP?

Unless the OEMs come up with an ID or specific model number you'll need to look at the actual ID plate.



# Questions

---

- When will these new MEWPs be arriving?
  - We at Sunbelt have already received some last November. Get with your supplier.
- Can ANSI fine me or a customer for not following these standards?
  - No ANSI is not a regulation but a standard, however OSHA can cite what's called a 5(a)(1) General Duty clause citation, which requires all employers to provide a safe worksite and assess and protect against recognized hazards. Since ANSI addresses hazards and methods to assess those hazards OSHA can base their General Duty Clause citation on ANSI standards. Operator's manuals may be a reference as well.
- When was the last ANSI standard changes?
  - 2006 which replaced 1999 standards, the standards were reaffirmed in 2014 so the 2006 standards were still good.
- Is secondary guarding now being offered by MEWP OEMs in the new standard?
  - No it is not.



Today's webinar will be accessible through the Learning Center on ARA's website in approximately two weeks.

Contact ARA Member Services at 1-800-334-2177 with any questions.



**Thank you!**

